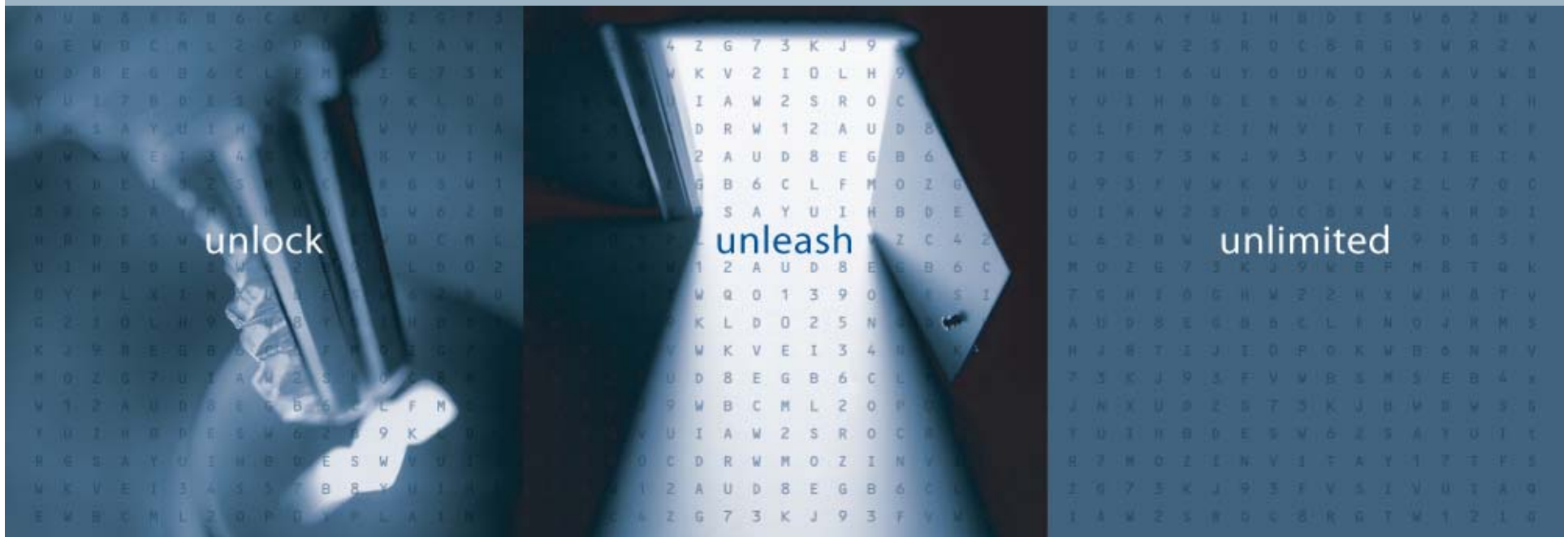


Session #1117A—Building SmartCuts to Key Metrics in Business Intelligence

Lester Knutsen

President, Advanced DataTools Corporation



Agenda

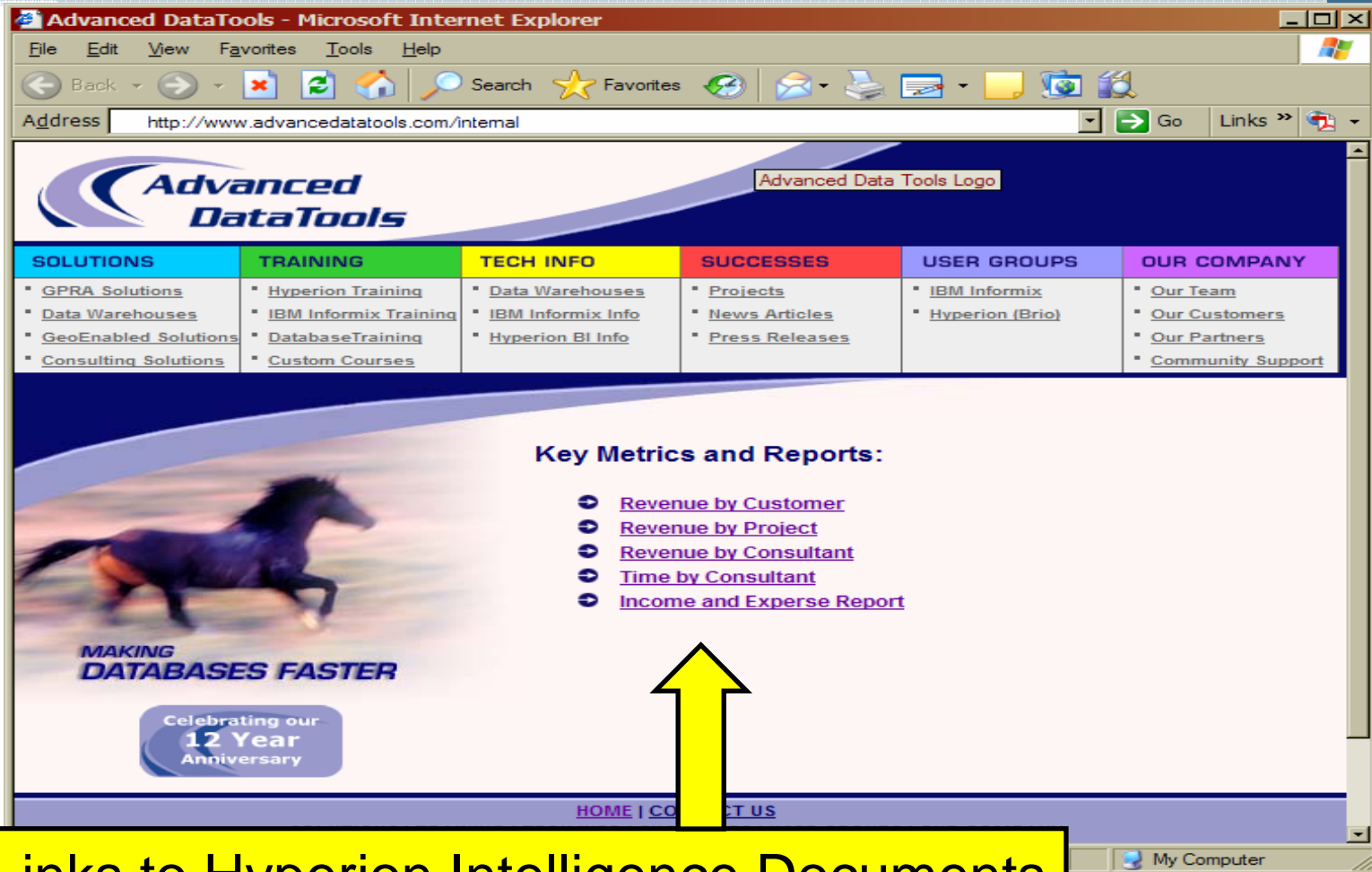
- What is a SmartCut?
- How to create a SmartCut to a Hyperion Performance Suite document
- How to pass query parameters in a SmartCut
- How to pass login information in a SmartCut
- Examples of SmartCuts in the real world



- “A *SmartCut* is a link, in the form of a special URL, to an item in the Hyperion Foundation Repository.”
Hyperion Foundation Users Guide (version 8.5) – page 2-16
- Can be used on Web pages to link to a document in the Hyperion Repository
- Can be used to send an e-mail link to a document
- Can be used by an application to call or run a document or report from the Hyperion Repository
- Can be used to call BQY document from within another BQY document



Example – Web Page with SmartCuts



Links to Hyperion Intelligence Documents



Example – Web Application

Lester Knutsen's Timesheet 03/06/2006 - 03/19/2006

Task	Balance Left	3/6	3/7	3/8	3/9	3/10	3/11	3/12	3/13	3/14	3/15	3/16	3/17	3/18	3/19	Total
		Mon	Tue	Wed	Thu	Fri	Sat	Sun	Mon	Tue	Wed	Thu	Fri	Sat	Sun	
Billable Projects																
BLM Task 1-BPS O&M																
BLM Task 2-CBS O&M																
BLM Task 3-FBMS																
FSA Brio Training																
FSA DW Project Manage																
HPS Public Training																
RD/FSA DWTechSupport																
Sub Total																
Non Billable																
HPS User Group																
Course Development																
GenAdm																
HOLIDAY																
R&D																
SALES-Gen																
SysAdm																
TRNG/CONF																
Sub Total																
Daily Total																

Save Finalize Mail Timesheet HPS Report

Button – with SmartCut to Report



Example – Result of Clicking on a Link

Clicking on the link displays the document from the Hyperion Foundation

Pivot2 Sort Outliner

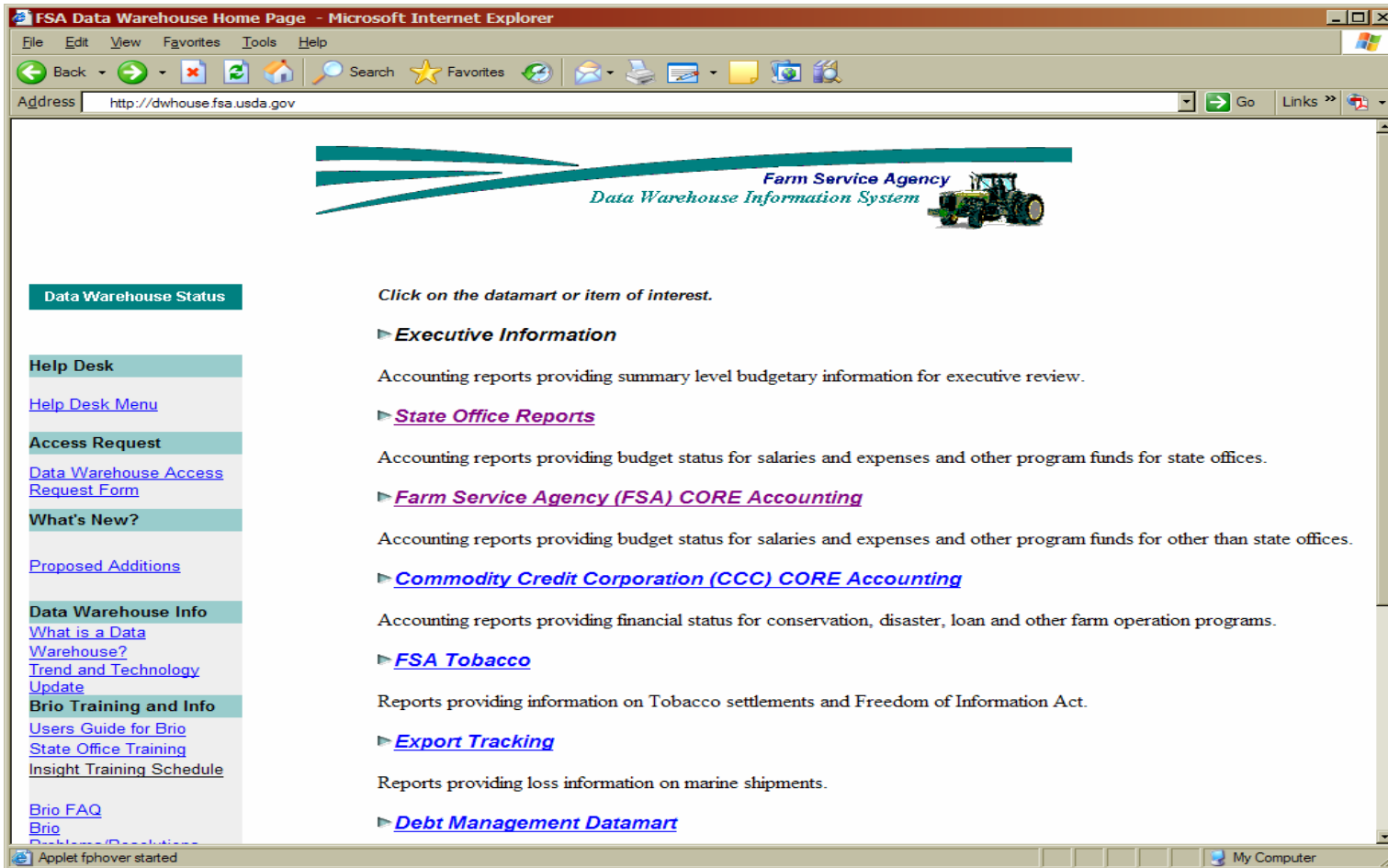
Sort: Fullname by Label using Sum

			02/20	02/21	02/22	02/23	02/24	02/25	02/26	02/27	02/28	03/01	03/02	03/03	03/04	Total
Lester Knutsen	ADTC	GenAdm	2	2	4		2	4						2	4	20
		HOLIDAY	8													8
		SALES-Gen		2		2	2									
	BLM	BLM Task 3-FBMS Inte		4	2	2								3		11
	FSA	FSA_06 Task 8	6		4		4					1		7		22
	FSA/RD	RD/FSA DWTechSupport		2		2	2									6
	InfxTr	IDS PT Course	2			2			4	8	8	8	8			40
	Total			18	10	10	8	10	4	4	8	8	9	8	12	4

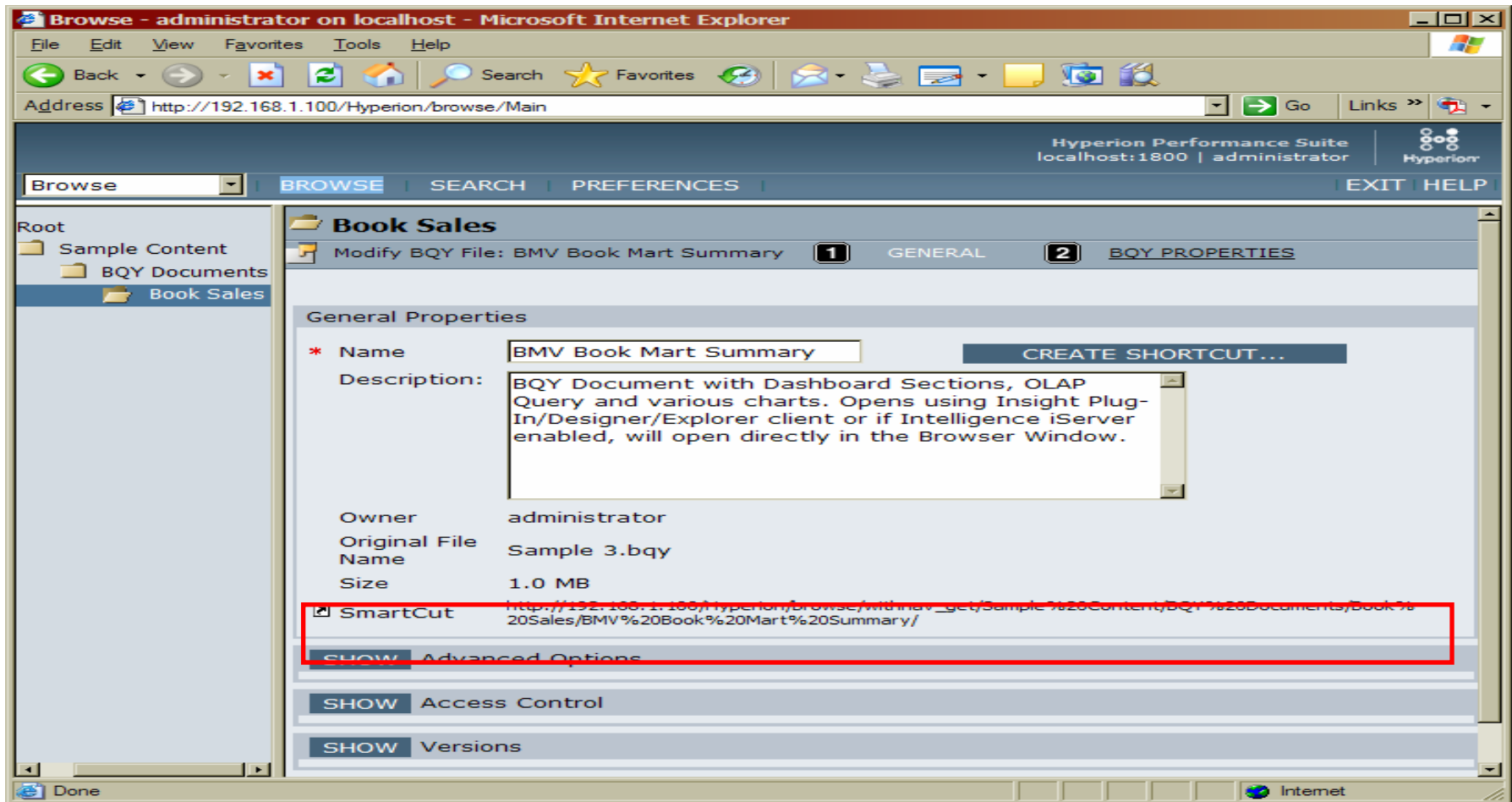
The Results of clicking on a SmartCut



Example – Custom Portals to Hyperion Intelligence Documents



- Look at the properties of a document, this will show you the default SmartCut for that document



- // This gets a document but prompts for a login

<http://marshps/Hyperion/browse/get/TRAINING/test2.bqy>

- // This gets a doc and passes a login

[http://marshps/Hyperion/browse/get/TRAINING/test2.bqy?user=admin
istrator&pass=admin
istrator](http://marshps/Hyperion/browse/get/TRAINING/test2.bqy?user=admin
istrator&pass=admin
istrator)

- // This is the SmartCut grabbed from the URL

[http://marshps/Hyperion/browse/withnav_get/Sample%20Content/
BQY%20Documents/Book%20Sales/BMV%20Book%20Mart%2
0Summary/](http://marshps/Hyperion/browse/withnav_get/Sample%20Content/
BQY%20Documents/Book%20Sales/BMV%20Book%20Mart%2
0Summary/)

- **SmartCuts are CASE sensitive**



- get – to display a document
- withnav_get – to display a document with the Foundation navigation header
- run – to run a job
- withnav_run – to run a job with the Foundation navigation header
- list – to display the contents of a folder (excluding any subfolders of the folder)
- listNav – to display just the parent folders and subfolders for the given folder
- listIndex – to display both the listNav and the list pages in a frameset
- listAll – to display the contents and the folders



- bqtype – application to use <plugin/ihtml>
- mimetype – specify the BQY job output type to open.
- filename – specify name of file to open
- dest – specify the UUID of an item when there are multiple documents with the same name
- version – specify the version to open
- JobOutput – specify the job output to open
- SectionName – specify BQY section to open
- Toolbar – specify whether the toolbar will display
- BoundRect – specify the height and width for the Web browser.
- ShowForm – give the user access to the browse run screen to set or change limits
- Limit/LimitValue – pass limits to the BQY



How to Pass Query Parameters in a SmartCut

- How do you get the Document to retrieve the records you want to display?
- In the Document Startup Section add some code to:
 - Look for parameters
 - Set some variables based on the parameters
 - Set the limits with the variables
 - Process the query
- In the SmartCut URL pass the parameters
Variablename=value



Document Query with 2 Limits, Region and Territory

Hyperion - Designer - test2.bqy

File Edit View Insert Format Query DataModel Tools Window Help

@Arial Unicode MS 8

Query Request(10) Limits(2) Sort(0)

Sort Drag Request Items here to sort them

Limit Region AND Territory

Request Region Territory Country Store Name Store Code Store Type Amount Sales Unit Sales Product Line Product Family

Sections

- Query
- Results
- Pivot
- Chart

Tables

Regions

- Region Key
- Region
- Territory
- Country

Stores

- Store Key
- Region Key
- Store Name
- Store Code
- Store Type
- Street Address
- City
- State Province
- Postal Code
- Store Manager
- Phone
- Fax
- Opened Date
- Remodel Date
- Sqft

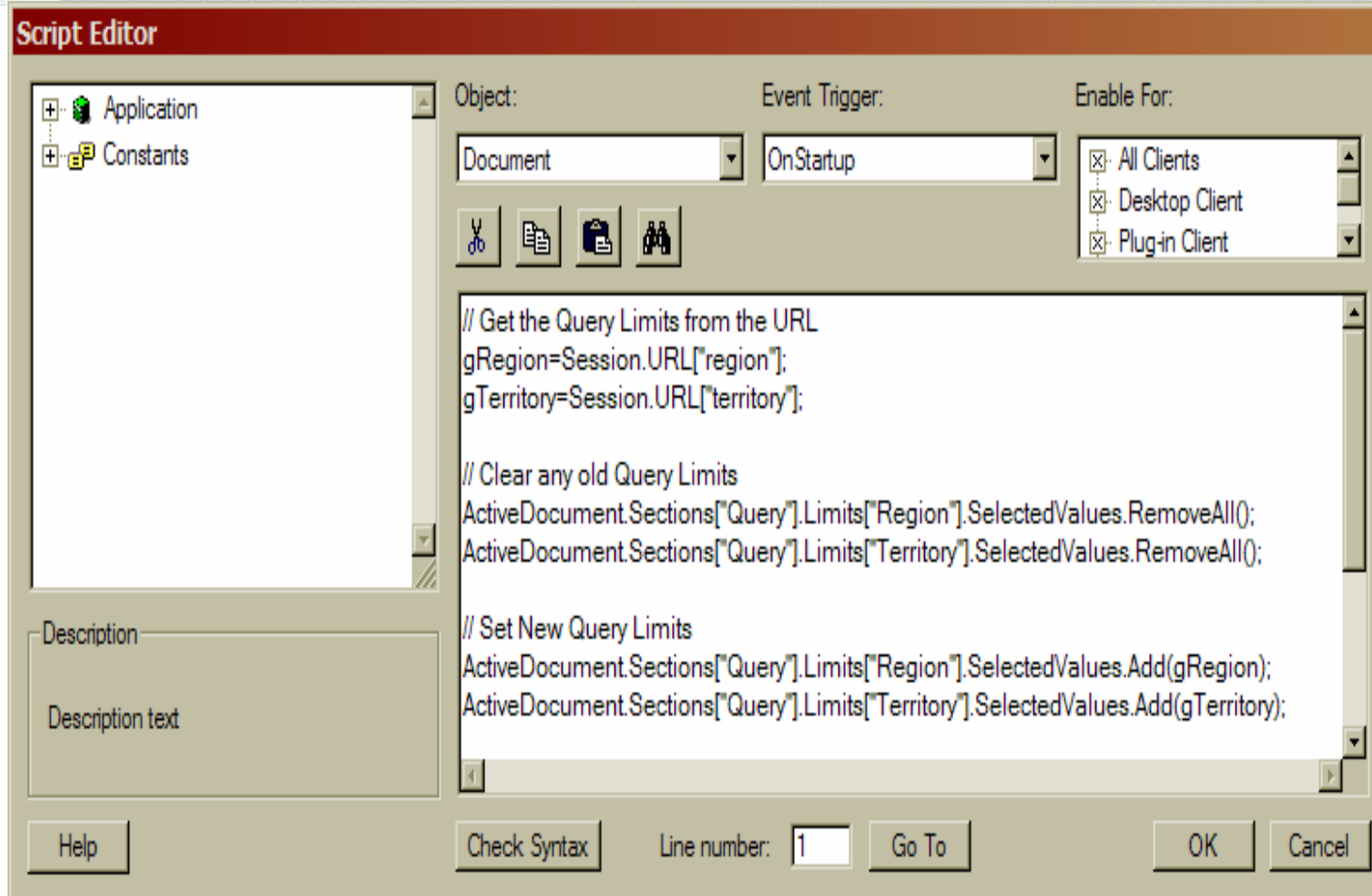
Sales Fact

- Day Key
- Product Key
- Store Key
- Amount Sales
- Unit Sales

No Results Yet Combined View: 4 topics



Document Startup Script



```
// Get the Query Limits from the URL
gRegion=Session.URL["region"];
gTerritory=Session.URL["territory"];

// Clear any old Query Limits
ActiveDocument.Sections["Query"].Limits["Region"].SelectedValues.RemoveAll();
ActiveDocument.Sections["Query"].Limits["Territory"].SelectedValues.RemoveAll();

// Set New Query Limits
ActiveDocument.Sections["Query"].Limits["Region"].SelectedValues.Add(gRegion);
ActiveDocument.Sections["Query"].Limits["Territory"].SelectedValues.Add(gTerritory);

// Process the Query
ActiveDocument.Sections["Query"].Process();

// Activate the Section
ActiveDocument.Sections["Chart"].Activate();
```



How to Pass Login Information in a SmartCut

- Send user login and password as parameters in the URL
 - This is NOT Secure
 - Password set in clear text
 - Password set in HTML source
- // This gets a doc and passes a login and query parameters

`http://marshps/Hyperion/browse/get/TRAINING/test2.bqy?user=administrator&pass=administrator®ion=Europe&territory=Western&JScript=enable`

- Key words
 - user – the user login
 - pass – the password

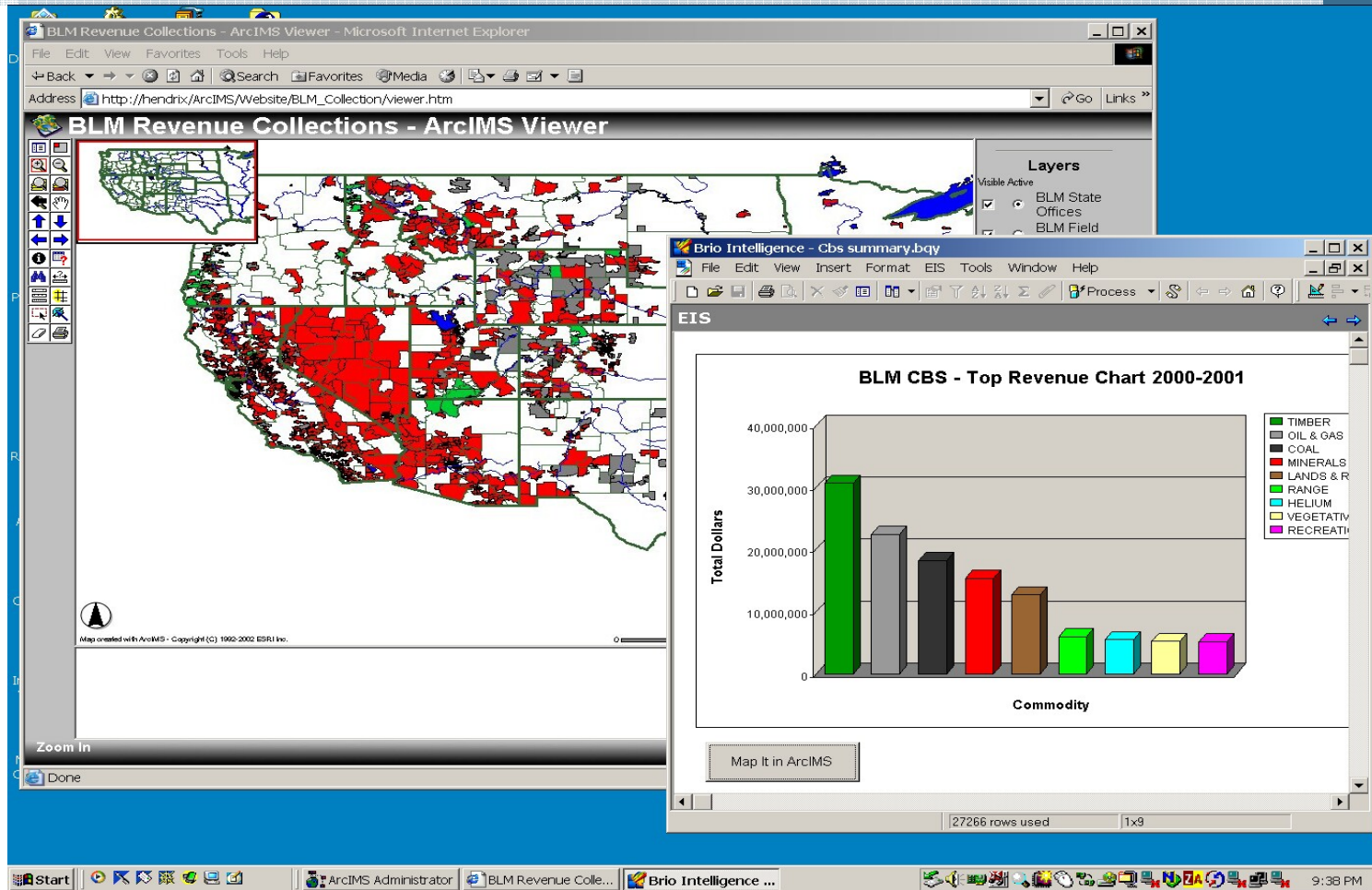


Use External Authentication for SmartCuts

- More Secure
- Authenticate through the Web server, LDAP, or Siteminder
- Web server sends user login
 - Setup \$HTTP_USER\$ or \$REMOTE_USER\$
 - Setup \$HTTP_PASSWORD\$ or \$TRUSTEDPASS\$
- No passwords or login are sent in clear text



DEMO – Calling Hyperion Intelligence from ESRI ARCIMS



Old Example – SmartCut URL to Call Hyperion Intelligence in Version 6

hendrix/ods-cgi/odscgi.exe?

Method=login&Username=brio&Password=brio&Docname=farm
payments.bqyfarmpayments&state=Colorado&county=Bent&JSc
ript=enable

Need to upgrade!



Old Examples – SmartCut URL to Call Hyperion Intelligence in Version 8.1

```
hendrix/Brio/dataaccess/Browse?REQUEST_TYPE=GET_DOCUMENT&DOC_UUID=000000fb5a47e095-0000-04b3-0a01013c&DOC_VERSION=1&user=brio&pass=brio&state=Colorado&county=Bent&JScript=enable
```

- Need to use DOC UUID
- Need to upgrade!



- Hyperion Documentation Reference:
 - Foundation Developer's Guide – Chapter 8 – SmartCuts
- Hyperion Developer Network:
 - <http://dev.hyperion.com/>
- Visit our Web site – Advanced DataTools Corporation
 - Updated presentation and sample code
 - <http://www.advanceddatatools.com/TechInfo/HPSInfo.html>
- Washington Area Hyperion User Group Web site:
 - Tips and tricks
 - <http://www.advanceddatatools.com/HyperionUserGroup/index.html>



Session #1117A—Building SmartCuts to Key Metrics in Business Intelligence

Lester Knutsen
President, Advanced DataTools Corporation
<http://www.advanceddatatools.com>

