


Hyperion® Performance Suite™

Release 8.2



What's New



Hyperion®

Hyperion Solutions Corporation

P/N: D832582000

Copyright © 1999–2004 Hyperion Solutions Corporation.

All rights reserved.

“Hyperion” and Hyperion's product names are trademarks of Hyperion. References to other companies and their products use trademarks owned by the respective companies and are for reference purpose only.

No portion of this manual may be reproduced or transmitted in any form or by any means, electronic or mechanical, including photocopying, recording, or information storage and retrieval systems, for any purpose other than the purchaser's personal use, without the express written permission of Hyperion.

The information contained in this manual is subject to change without notice. Hyperion shall not be liable for errors contained herein or consequential damages in connection with the furnishing, performance, or use of this material.

This software described in this manual is licensed exclusively subject to the conditions set forth in the Hyperion license agreement. Please read and agree to all terms before using this software.

GOVERNMENT RIGHTS LEGEND: Use, duplication or disclosure by the U.S. Government is subject to restrictions set forth in the applicable Hyperion license agreement and as provided in DFARS 227.7202-1(a) and 227.7202-3(a) (1995), DFARS 252.227-7013(c)(1)(ii) (Oct 1988), FAR 12.212(a) (1995), FAR 52.227-19, or FAR 52.227-14, as applicable.

Hyperion Solutions Corporation
1344 Crossman Avenue
Sunnyvale, California 94089

Printed in the U.S.A.

Contents

What's New in Hyperion Performance Suite Release 8.2

- Hyperion Branding of the Products 2
- Dashboards 4
 - Dashboard Management 4
 - Building Dashboards 5
- Web Services and Application Inter Operability 6
- Logging Infrastructure 7
- Essbase Support Enhancements 8
- Hyperion Intelligence Enhancements 9
- Hyperion Foundation Enhancements 10
- Hyperion SQR Enhancements 10

What's New in Hyperion Performance Suite Release 8.2

Hyperion Performance Suite release 8.2 includes several product functionality enhancements along with several changes to support the new branding of the product as a Hyperion product. These enhancements are available on all platforms on which the product is supported.

In This Document	Hyperion Branding of the Products	2
	Dashboards.	4
	Web Services and Application Inter Operability	6
	Logging Infrastructure	7
	Essbase Support Enhancements	8
	Hyperion Intelligence Enhancements	9
	Hyperion Foundation Enhancements	10
	Hyperion SQR Enhancements.	10

Hyperion Branding of the Products

With the acquisition of Brio by Hyperion, the product names have undergone slight changes to reflect the new company ownership as well as to align them with existing Hyperion product-naming conventions.

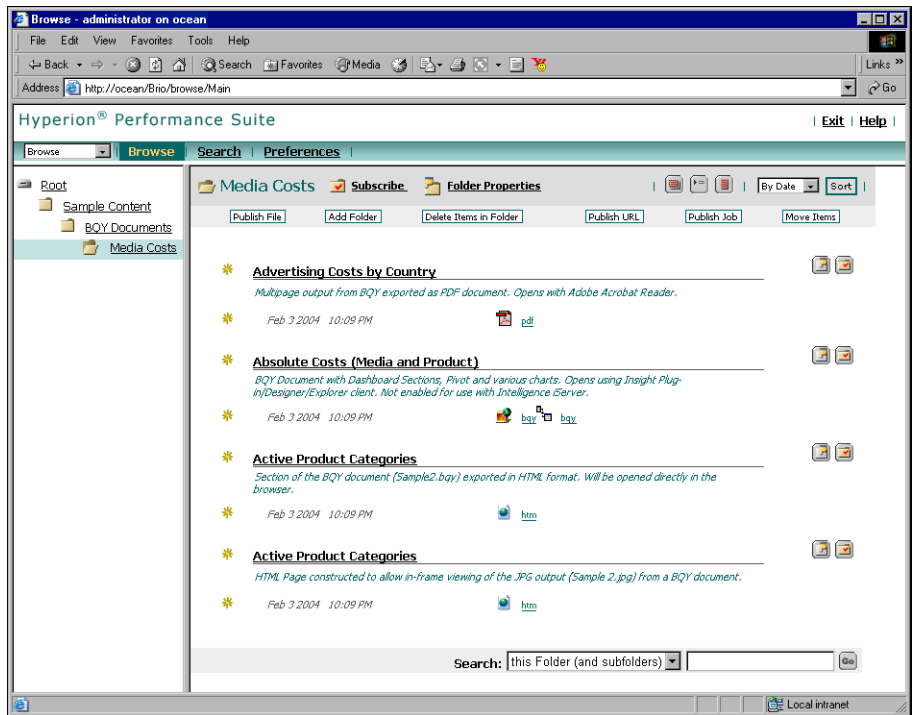
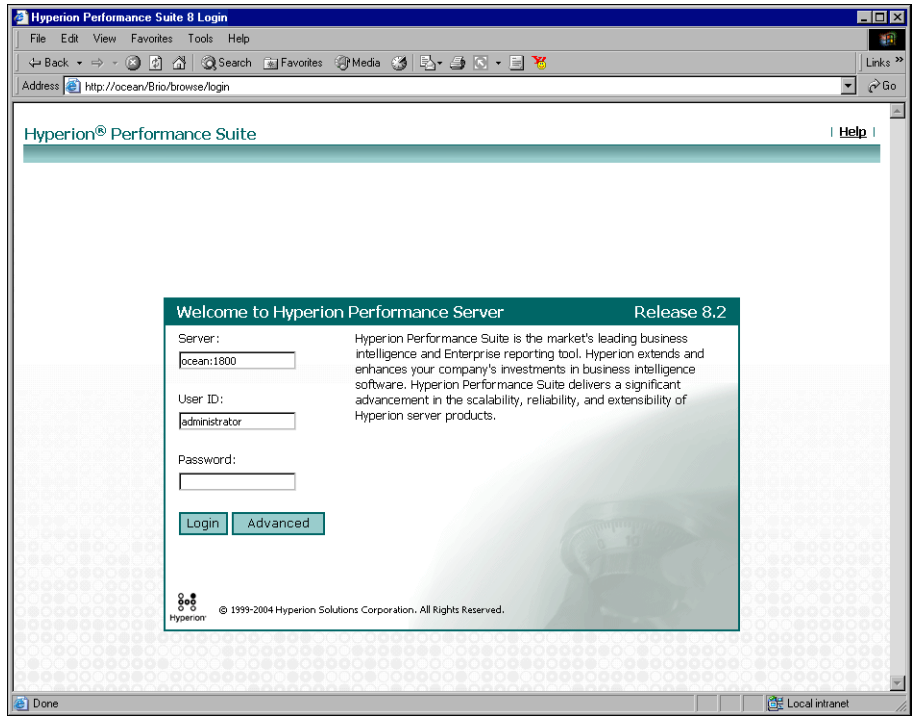
Table 1 shows the new names for each of the product components.

Table 1 New Hyperion Product Names

New Name	Old Name
Hyperion Performance Suite	Brio Performance Suite
Hyperion Intelligence Server	Insight Server
Hyperion Intelligence Client	Insight (the plug-in)
Hyperion Intelligence iServer	Intelligence iServer
Hyperion Designer	Designer
Hyperion Explorer	Explorer
Hyperion SQR iServer	Reports iServer
Hyperion SQR Server	SQR (standalone)
Hyperion SQR Developer	SQR Developer

Along with these name changes, the products include several visual updates to reflect the Hyperion standard look and feel. The in-product branding elements of splash screens, about boxes, and product documentation will be updated to reflect the new legal entity.

Hyperion Foundation underwent visual changes for the out-of-box deployment of the Web interface to match Hyperion interface standards. While predominately color, style, and font changes, these updates provide a powerful visual link and foster familiarity of use between the full range of Hyperion products—all in addition to providing a cleaner and more stylish interface.



Dashboards

Hyperion Performance Suite enables business performance information to be aggregated, presented and distributed throughout the organization in summary level pages organized by user's job function or business area.

The BQY Dashboard (formerly EIS) section of the BQY model of Intelligence will assemble reporting and analysis output from BQY and SQR tools, as well as generic HTML content published in the repository. It will allow content to be placed, formatted and controlled. The dashboard section will inherit all aspects of row level security, so presenting personalized views of data.

Published dashboards can be shared among users as with any other published content allowing users with appropriate role based access to browse to, subscribe and open the dashboards. Additionally, dashboards can be saved locally and used in disconnected mode.

A new module within the management and deployment foundation allows dashboards (and other published items) to be pushed to specified users. Once pushed, a dashboard will appear in the user's personalized desktop area, allowing centralized production and deployment of performance dashboards.

Dashboard Management

A number of new features have been added to Hyperion Performance Suite's administration and deployment foundation to support the creation, deployment, and management of dashboards. Many of these features extend to all published content. They include:

- The new View Manager module provides a “personal” view of published items to which users subscribe or that have been pushed to the user.
- The ability to subscribe to an item is enhanced to allow the publisher to permit a user access to the item from the View Manager.
- When publishing an item, the publisher can specify the audience to whom the item is pushed, thereby causing it to appear in specified users' View Manager modules.

- Three roles have been created to support these actions: the *View Manager* role, the *Push* role, and the *Dashboard Administrator* role.
- The View Manager module has two tabs, one that holds the personal view of items, and an administration tab to determine the items displayed in the personal view.

Building Dashboards

Dashboards can be built using the existing drag-and-drop Hyperion Intelligence tools, which leverages any skills and data models that may already exist.

A number of enhancements have been made to Hyperion Intelligence to further extend dashboard application capabilities:

- Client-side JavaScripting provides the ability to locally execute commands.
- Support for embedded JPG and GIF file formats in the Dashboard section.
- Support for embedded HTML, which enables content from either i-frames or URLs of external Web or Repository published items to be placed directly into a dashboard.
- The ability to create Dashboard sections using the Intelligence Client (formerly known as the Insight plug-in).
- An XML format version of the Dashboard section allows programmatic modification of the dashboard, and exposes the content to other applications.

Web Services and Application Inter Operability

Hyperion Performance Suite Release 8.2 delivers the Browse function of the Repository as a Web service.

The functionality is at the level of the existing APIs and allows an application to perform these functions:

- Log in and create a session
- View folders as defined by the user's role and permissions
- Navigate the folder structure
- View items as defined by the user's role and permissions
- View item information such as versions, descriptions, title and MIME type
- Select an item or specific version of an item
- Retrieve the item and access it via the application that is associated with that item
- Logout and cancel the session
- Manage any error handling that traps any negative cases
- Manage any logging and audit tracking requirements

Logging Infrastructure

As the scale of an implementation grows, the need to manage and monitor the systems activities grows correspondingly. This release provides two key system monitors and lays down the infrastructure for further monitoring and management tools.

- A new logging mechanism allows Hyperion Performance Suite administrators to identify system and environmental bottlenecks, to trap errors from Hyperion components and databases, and to help identify problems resulting from access control configuration.
- The system audit function allows the administrator to track user behavior and the use of content throughout the system. This enables administrators to provide the best service to the user population, as well as to ensure compliance within licensing agreements.

Essbase Support Enhancements

The Hyperion Performance Suite products continue to support Essbase as a rich data source, and continue to add functionality to expose more of the unique capabilities of the Essbase engine. Near term additions planned for January 2004 delivery on this front include:

- Support for Essbase version 7 (due out in February 2004)
- Support for Essbase Hybrid Analysis
- The addition of Essbase as a data source for the visual query building provided by the SQR Developer product
- Support for BQY documents running as scheduled jobs to access Essbase databases
- Additions to the Hyperion Intelligence Object Model to support higher levels of automation and dashboard construction when including Essbase content in a Hyperion Intelligence document

Hyperion Intelligence Enhancements

Enhancements to Hyperion Intelligence include:

- The SmartCut functionality in Hyperion Performance Suite's Foundation component now differentiates between the HTML and plug-in versions of a BQY document. Additionally, certain settings (such as toolbar display and version control) and parameter passing can be specified in the SmartCut.
- BQY OLAP job scheduling
- OLAP Query Sections can be scheduled as jobs in the Foundation
- Support for Essbase 7
- Row-level security (RLS) now allows all client requests for Data Access Service (DAS) to be able to utilize the row-level security restrictions as they access the data.
- BQY pass-through sign-on has been implemented to the transparent use of the Hyperion Performance Suite logon to access the database that holds the source data for BQY files. In release 8.2, database login authentication capabilities (previously in Hyperion Intelligence) now support both BQY and SQR jobs. This feature allows pass-through sign-on for multiple data sources against all authentication system types and can be applied specifically to a job or file.

Hyperion Foundation Enhancements

Enhancements to Hyperion Foundation include:

- Visual changes for the out-of-box deployment of the Web interface to match Hyperion interface standards
- Scheduling of jobs based on time zone

Hyperion SQR Enhancements

Enhancements to Hyperion SQR include:

- HTML-based publishing, which replaces the Job Publisher applet for SQR and externally produced content
- Support for Essbase 7
- Support for the creation of reports using Report Developer (the visual report building tool) that query Essbase.
- PDF library
- Navigation bar
- Multiple BQD enhancements
- SQR Developer